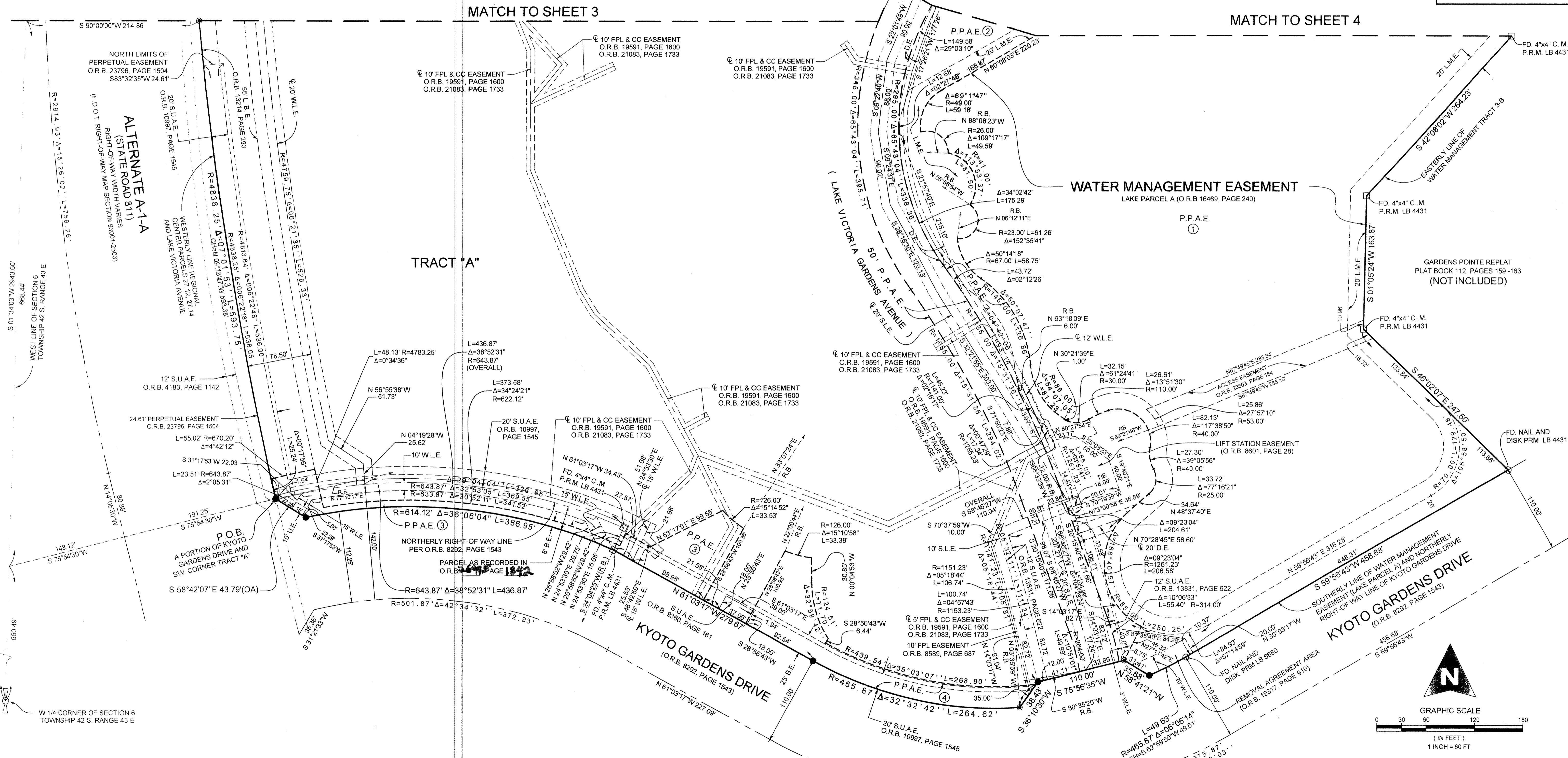
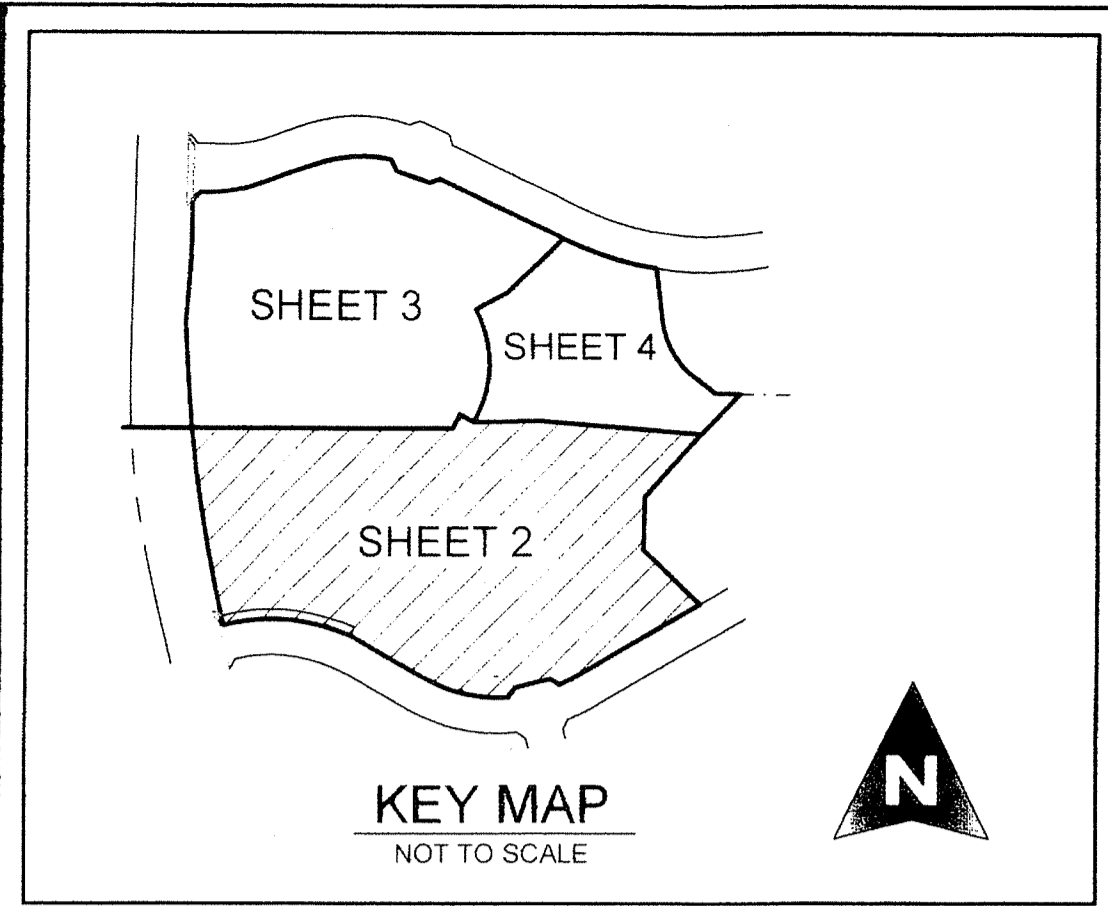


# DOWNTOWN AT THE GARDENS

LYING IN SECTION 6, TOWNSHIP 42 SOUTH, RANGE 43 EAST, CITY OF PALM BEACH GARDENS, PALM BEACH COUNTY, FLORIDA, BEING A REPLAT OF TRACT "A", DOWNTOWN AT THE GARDENS AND LANDMARK AVENUE, AS RECORDED IN PLAT BOOK 101, PAGES 12 THROUGH 15, PUBLIC RECORDS OF PALM BEACH COUNTY, FLORIDA, AND A PORTION OF KYOTO GARDENS DRIVE, AS RECORDED IN OFFICIAL RECORD BOOK 8292, PAGE 1543, PUBLIC RECORDS OF PALM BEACH COUNTY, FLORIDA,

131

COUNTY OF PALM BEACH )  
 STATE OF FLORIDA ) SS  
 THIS PLAT WAS FILED FOR RECORD AT )  
 M. THIS DAY OF )  
 2014, AND DULY )  
 RECORDED IN PLAT BOOK NO. )  
 ON PAGE THRU )  
 SHARON R. BOCK,  
 CLERK AND COMPTROLLER  
 BY: \_\_\_\_\_, D.C.

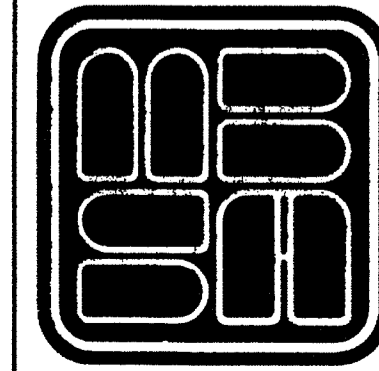


AREA TABULATION (P.P.A.E. 1 - 6, 7A AND 10)

①	= 11.78	ACRES
②	= 2.32	ACRES
③	= 0.31	ACRES
④	= 0.33	ACRES
⑤	= 0.92	ACRES
⑥	= 0.50	ACRES
7A	= 0.01	ACRES
⑩	= 0.44	ACRES
TOTAL	= 16.61	ACRES

REGIONAL CENTER PARCELS 27.12, 27.14  
AND LAKE VICTORIA GARDENS AVENUE,  
PLAT BOOK 94, PAGES 40 - 42

SHEET 2 OF 4



**MICHAEL B. SCHORAH & ASSOCIATES, INC.**  
 1850 FOREST HILL BLVD., SUITE 206  
 WEST PALM BEACH, FLORIDA 33406  
 EB# 2438 TEL. (561) 968-0080 FAX. (561) 642-9726 LB# 2438

DOWNTOWN AT THE GARDENS

Z:\Downtown at the Gardens\1504\SURVEY\1504\_PLAT.dwg, 7/23/2014 3:33:37 PM, kbaspitt